

MACHINE

- AC MOTOR
- DC MOTOR
- MOTOR POWER SUPPLY
- TRAINING MACHINE
- TRAINING CNC
- AND MORE...



TM120-220

THREE-PHASE ASYNCHRONOUS SQUIRREL CAGE MOTOR

Voltage:	220/380V(230/400V)
Current:	0.48/0.83A
Frequency:	50Hz
Output power:	120W
Rotate speed:	1400rpm
Shaft height:	63mm
Dimension:	230x130x165mm



TM120-220

TM180-220DS

DOUBLE SPEED THREE-PHASE ASYNCHRONOUS SQUIRREL CAGE MOTOR

Voltage:	380V(400V)
Current:	0.92/0.48A
Frequency:	50Hz
Output power:	180/120W
Rotate speed:	2800/1400rpm
Shaft height:	63mm
Dimension:	230x130x165mm



TM180-220DS

SM120-220SR

SINGLE-PHASE START & RUN CAPACITORS MOTOR

Voltage:	220V(230V)
Current:	1.36A
Frequency:	50Hz
Output power:	120W
Rotate speed:	2800rpm
Shaft height:	63mm
Dimension:	230x130x190mm



SM120-220SR

SM120-220S

SINGLE-PHASE START CAPACITOR MOTOR

Voltage:	220V(230V)
Current:	1.36A
Frequency:	50Hz
Output power:	120W
Rotate speed:	2800rpm
Shaft height:	63mm
Dimension:	230x130x190mm



SM120-220S

DM120-220M

PERMANENT MAGNET DC MOTOR

Armature voltage: 0~220VDC
 Max. armature current: 0.9A
 Max. output power: 123W
 Max. rotate speed: 1500rpm
 Shaft height: 63mm
 Dimension: 230x130x150mm



DM120-220M



DM120-220SS

DM120-220SS

SEPARATED/SHUNT DC MOTOR

Armature & excitation voltage: 0~220VDC
 Max. armature current: 0.9A
 Max. excitation current: 0.13A
 Max. output power: 123W
 Max. rotate speed: 1500rpm
 Shaft height: 63mm
 Dimension: 230x130x150mm

DM120-220S

SERIES DC MOTOR

Armature & excitation voltage: 0~220VDC
 Max. armature & excitation current: 1.1A
 Max. output power: 123W
 Max. rotate speed: 4000rpm
 Shaft height: 63mm
 Dimension: 230x130x150mm



DM120-220S

DM120-220C

COMPOUND DC MOTOR

Armature voltage: 0~220VDC
 Excitation voltage: 220VDC
 Max. armature current: 0.9A
 Excitation current: 0.13A
 Max. output power: 123W
 Max. rotate speed: 1500rpm
 Shaft height: 63mm
 Dimension: 250x130x150mm



DM120-220C

UM120-220S

DC/AC UNIVERSAL MOTOR

Armature & excitation voltage:	220VDC/AC
Max. armature & excitation current:	0.9A
Max. output power:	123W
Max. rotate speed:	4000rpm (DC) 3000rpm (AC)
Shaft height:	63mm
Dimension:	230x130x150mm



UM120-220S



DG120-220SS

DG120-220SS

DC GENERATOR

Excitation voltage:	DC220V
Excitation current:	0.13A
Max. output voltage:	DC220V
Max. output power:	100W
Max. rotate speed:	1500rpm
Shaft height:	63mm
Dimension:	230x130x150mm

TM150-220SR

THREE-PHASE SLIP-RING ASYNCHRONOUS MOTER

Voltage:	220/380V
Current:	1.2A
Frequency:	50Hz
Output power:	150W
Rotate speed:	1420rpm
Shaft height:	81mm
Dimension:	280x170x180mm



TM150-220SR



TM150-220S

TM150-220S

THREE-PHASE SYNCHRONOUS MOTER/GENERATOR

Voltage:	220V/380V
Current:	0.3A
Frequency:	50Hz
Rotor voltage:	24VDC
Rotor current:	2.6ADC
Output power:	150W
Rotate speed:	1500rpm
Shaft height:	81mm
Dimension:	240x170x180mm

TG80-3000

DC TACHOGENERATOR FOR 200W MACHINES

This tachogenerator delivers a continuous voltage which is proportional to the rotating speed of 200W machines.

Output voltage:	0~80VDC
Max. current:	200mA
Power:	16W
Max. speed:	3000rpm
Shaft height:	63mm
Dimension:	170x130x165mm



TG80-3000



TM80-3000

TM80-3000

TACHOMETER FOR 200W MACHINES

The tachometer display in rpm the rotating speed of 200W machines by converting the voltage of the tachogenerator.

Input voltage:	0~80VDC
Display:	LED 4digits
Dimension:	170x135x70mm

F8-006

STARTING RESISTOR

Resistor (AC):	0~100Ω / Max. 0.5A
Resistor (DC):	50Ω / Max. 0.5A
Dimensions:	240×170×90 mm

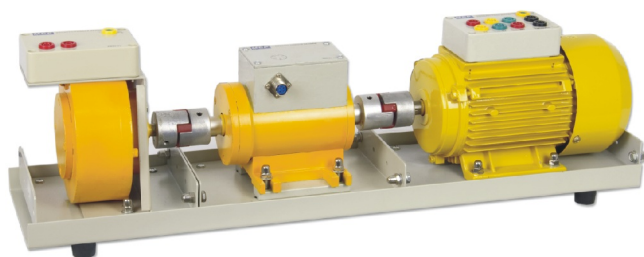


F8-006

MB13

MOTOR CONNECTING MACHINE BED

Dimensions:	600×145×41 mm
-------------	---------------



MB13

TSP80-5S

DYNAMIC TORQUE SENSOR

Working voltage: $\pm 15\text{VDC}$
 Max. torque: $\pm 5\text{Nm}$
 Max. rotate speed: 8000rpm
 Shaft height: 63mm
 Dimensions: 215 x 130 x 145 mm



TSP80-5S

TSP80-5M

3 IN 1 TORQUE METER

Torque measuring range: $0 \sim \pm 5.000 \text{ N.M.}$
 Rotate speed measuring range: $0 \sim 5000 \text{ rpm}$
 Power measuring range: $0 \sim 2600\text{W}$
 Output voltage: $\pm 15\text{VDC}$
 Dimensions: $170 \times 135 \times 70 \text{ mm}$



TSP80-5M

PB80-03B

MAGNETIC POWDER BRAKE

Max. torque: 3Nm
 Max. current: 0.5ADC
 Shaft height: 63mm
 Dimension: 150x130x145mm



PB80-03B

PB80-03C

MAGNETIC POWDER BRAKE CONTROLLER

Output current: $0 \sim 0.5\text{ADC}$
 Max. output voltage: 9VDC
 Dimension: $170 \times 135 \times 70 \text{ mm}$



PB80-03C

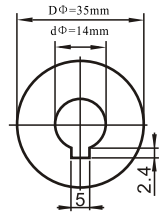
CP14

Couplings

A complete set of couplings comprises 2 metal hubs and a polyamide cross slide block, for 200W machine.



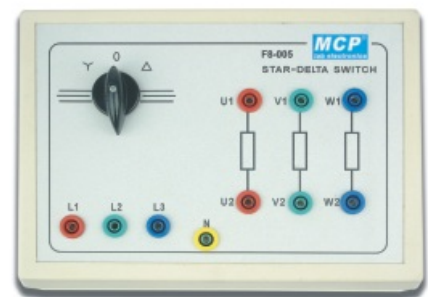
CP14



F8-005 STAR-DELTA SWITCH

For AC motor TM120-220

- Specifications:
- .Max. voltage: 400V
 - .Max. current: 10A
 - .Safety sockets: Φ 4mm
 - .Dimensions(W×H×D): 240×170×90
 - .Weight: 0.5kg

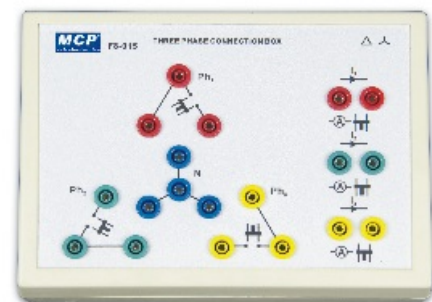


F8-005

F8-015 THREE PHASE MOUNTING PLATE

For three phase AC motor

- Specifications:
- .Max. voltage: 400V
 - .Max. current: 10A
 - .Safety sockets: Φ 4mm
 - .Dimensions(W×H×D): 240×170×90
 - .Weight: 0.5kg



F8-015

TB412

AC MOTOR POWER SUPPLY

Features

- .General control with key-locked switch
- .Protected with high sensitivity T.M.C.B. And emergency pushbutton
- .4mm safety socket for connection
- .Power supply cable with three-phase plug



TB412

Specifications

- .AC thermal-magnetic circuit breaker: 4P/16A/400V/30mA
- .Three-phase AC output: 380V/10A+N and PE
- .AC outlet: 220V/10A (2 universal single-phase sockets)
- .Dimensions: 400×170×200 mm
- .Weight: 5kg
- .Power supply: 3×380VAC/N/PE/50Hz (or other voltages upon request)

BT414

DC MOTOR POWER SUPPLY

Features

- .Both 24V and 220V DC output
- .Fixed output for excitation
- .Adjustable output for armature, speed control
- .4mm safety socket for motor connection



BT414

Specifications

- .Excitation voltage: 24V/2A, 220V/0.5A
- .Armature voltage: 0~24V/6A, 0~220V/1.5A
- .Dimensions: 285×150×285 mm
- .Weight: 11kg
- .Power supply: 220VAC/50Hz (or other voltage upon request)

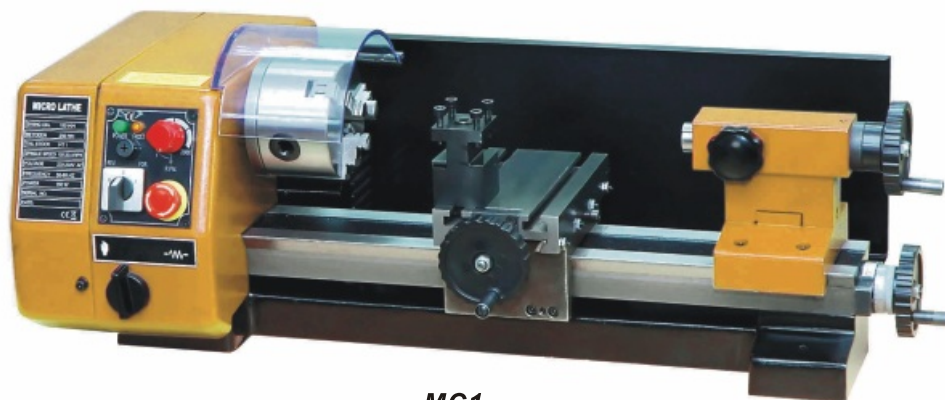
MC1 LATHE MACHINE

Features

- .Variable speed
- .Over load protection
- .Inside leadscrew

Technical Data

Working area	Turning diameter over bed (Max.)	140mm
	Travel across slide	50mm
	Center width	250mm
Spindle	Chuck diameter	80mm
	Spindle speed	100~2000r/min.
	Spindle through-hole	10mm
	Spindle mount	MT2
	Spindle motor power	150W
Tool rest	Toll position	1
	Tool dimension	8×8mm
Tailstock	Tailstock taper	MT1
	Tailstock sleeve diameter	12mm
	Travel of tailstock	20mm
Range of threads	Metric version	0.5~1.25mm (5 thread pitches)
	Imperial version	16~24TPI (5 thread pitches)
Accessory	Φ80mm 3-jaw chuck, dead center Mt1, wrench set, oil can	
Power supply	230V or 120V	
Dimensions(W×H×D)	620mm × 300mm × 220mm	
Packing size(W×H×D)	680mm × 350mm × 390mm	
Weight	23kg(NW)/32kg(GW)	



MC1

TRAINING MACHINE

MC1 Optional Accessories

Accessories in Black are necessary

M:10253B	Stand		M:10085	Thread cutting kits (imperial z=36,40,42, 45,48,50,54,57,60)	
M:10005	Cutter 11 pieces set		M:10086	Wood tool rest+center	
M:10010	4-Jaw chuck (dia 80mm)		M:10087	Ball head cutting set	
M:10015	Lathe dog		M:10088	Headstock center (MT #2)	
M:10035	Quick vice (width 50mm)		M:10089	Tool holder (Cut off blade holder Boring cutter holder)	
M:10079	Face plate (Dia 112mm, T-slot 8mm)		M:10089A	Tool Cut-off blade size: 70*2*10mm Boring cutter Dia 10mm	
M:10079A	Clamping kit for face plate		M:10090	Mill chuck set (3,4,5,6mm)	
M:10080	Steady rest		M:10091	Tailstock chuck+shank (MT #1,10mm)	
M:10081	Follow rest		M:10093	Rolling center (MT #1)	
M:10082	Vertical slider		M:10144	Quick change cutter rest	
M:10083	Horizontal slider		M:10144-1	Tool post	
M:10084	Thread cutting kits (metric z=40,42,45, 48,50,54,60)		M:10144-2	Cutter holder	

POWER SUPPLY

TEST INSTRUMENT

EDU. INSTRUMENT

METER

MACHINE

ACCESSORY

MX1 MILLING MACHINE

Features

- .Variable speed
- .Over load protection
- .Inside leadscrew

Technical Data

Drilling capacity		10mm
End milling capacity		10mm
Face milling capacity		16mm
Table	Table size	240×145mm
	T slot (amount×width×distance)	3×8mm×45mm
	Max. load	20kg
Travel	X travel	180mm
	Y travel	90mm
	Z travel	230mm
	Spindle nose to table	45~275mm
	Max. distance spindle to table	220mm
Spindle	Spindle taper	MT2
	Spindle motor	150W
	Spindle speed	100~1000r/min.(low range) 100~2000r/min.(high range)
Accessory	Φ10mm drill chuck, wrench set, oil can	
Power supply	230V or 120V	
Dimensions(W×H×D)	340mm × 320mm × 600mm	
Packing size(W×H×D)	410mm × 420mm × 660mm	
Weight	32kg(NW)/44kg(GW)	






MX1

TRAINING MACHINE

MX1 Optional Accessories

Accessories in Black are necessary

M:10035	Quick vice (width 50mm)		M:10076	MT2 collet \varnothing 8mm	
M:10038	2 Flute Hss end mill \varnothing 4mm		M:10077	MT2 collet \varnothing 10mm	
M:10039	2 Flute Hss end mill \varnothing 6mm		M:10078	MT2 collet \varnothing 3-10mm set	
M:10040	2 Flute Hss end mill \varnothing 8mm		M:10104	Clamping kit 12 pcs	
M:10041	2 Flute Hss end mill \varnothing 10mm		M:10105	Clamping kit 24 pcs	
M:10067	2 Flute Hss end mill \varnothing 3mm		M:10106	Oil tray for X1	
M:10068	2 Flute Hss end mill \varnothing 5mm		M:10108	Vice width 55mm	
M:10069	2 Flute Hss end mill \varnothing 3~10mm set		M:10116	Stub milling machine arbor	
M:10070	Mill chuck set		M:10117	Boring arbor with boring cutter	
M:10071	Indexable carbide end mill		M:10118	Stub milling machine arbor	
M:10072	MT2 collet \varnothing 3mm		M:10133	Vice width 70mm	
M:10073	MT2 collet \varnothing 4mm				
M:10074	MT2 collet \varnothing 5mm		M:10254	Stand	
M:10075	MT2 collet \varnothing 6mm				

POWER SUPPLY

TEST INSTRUMENT

EDU. INSTRUMENT

METER

MACHINE

ACCESSORY

MPC1 CNC LATHE



Features

- .2 in 1 and manual function
- .Pre-installed hand wheel
- .PC based CNC system, high reliability, operate simple
- .Connect with PC via network cable
- .G code can compatible with FANUC
- .Safe and reliable whole shields shell
- .High quality 2 axis step motor, high torque brushless motor
- .Metric Mt3 spindle
- .Safety electrical components of high quality and fast plug
- .CE safety certification



MPC1

Technical Data

Working area	Turning diameter over bed (Max.)	140mm
	Travel across slide	75mm
	Center width	250mm
Spindle	Chuck diameter	80mm
	Spindle speed	100~2000r/min.
	Spindle through-hole	11mm
	Spindle mount	MT2
	Spindle motor power	150W
Feed (stepper)	X travel	100mm
	Y travel	150mm
	The max. moving speed	300mm/min.
	The mas. feeding speed	200mm/min.
Tool rest	Power of motor	1.35Nm
	Toll position	1
	Tool dimension	8×8mm
Tailstock	Tailstock taper	MT2
	Tailstock sleeve diameter	12mm
	Travel of tailstock	20mm
Accuracy	Positioning accuracy	0.02mm
	Repeatability accuracy	0.02mm
Power supply	230V or 120V	
Dimensions(W×H×D)	730mm × 380mm × 350mm	
Packing size(W×H×D)	830mm × 480mm × 550mm	
Weight	45kg(NW)/65kg(GW)	

Optional Accessories

Accessories in Black are necessary

M:10091 Tailstock chuck+shank



M:10187 computer stand



M:10093 Rolling center



M:10189 stand (1000x650x800mm)
(Bench Series only)



M:10186 Hand wheel



M:10200 Cutting set 8mm(Tin Coated)



M:10200-1 Tip replacement



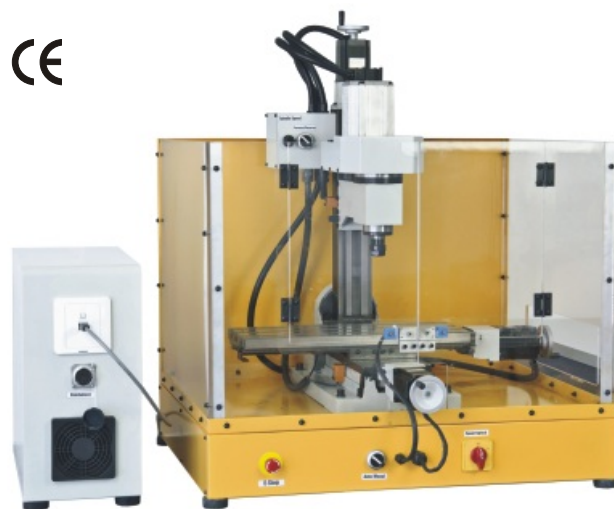
MPX1 CNC MILLING & ENGRAVING MACHINE



Features

.2 in 1 and manual function

- .Pre-installed hand wheel
- .PC based CNC system, high reliability, operate simple
- .Connect with PC via network cable
- .G code can compatible with FANUC
- .Safe and reliable whole shields shell
- .400×145mm table size
- .Safety electrical components of high quality and fast plug
- .CE safety certification



MPX1

Technical Data

Table	Table size	400×145mm
	T slot (amount×width×distance)	3×8mm×45mm
	Max. load	20kg
Travel	X travel	230mm
	Y travel	120mm
	Z travel	230mm
	Spindle nose to table	45~275mm
	Spindle center to column	140mm
Spindle	Spindle taper	ER16
	Spindle motor	500W
	Spindle speed	300~20000r/min.
Feed (stepper)	The max. moving speed	300mm/min.
	The max. feeding speed	200mm/min.
	Power of motor X/Y/Z axis	1.35Nm
Accuracy	Positioning accuracy	0.02mm
	Repeatability accuracy	0.02mm
	Power supply	230V or 120V
Dimensions(W×H×D)	560mm × 680mm × 800mm	
Packing size(W×H×D)	660mm × 780mm × 900mm	
Weight	90kg(NW)/120kg(GW)	

Optional Accessories

Accessories in Black are necessary

M:10036	Quick vice 100mm	
M:10105	Clamping kit 24 pcs	
M:10186	Hand wheel	

M:10183 6mm engraving tool set



M:10187 computer stand



M:10189 stand (1000x650x800mm)
(Bench Series only)



M:10608 ER16 Collet set - 8 pieces
(3,4,5,6,7,8,9 and 10mm)



POWER SUPPLY

TEST INSTRUMENT

EDU. INSTRUMENT

METER

MACHINE

ACCESSORY